



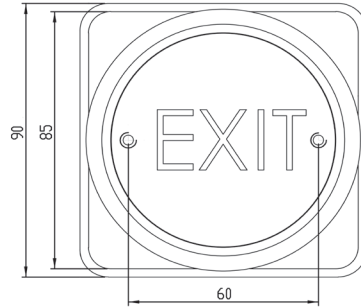
PUSH PLATE EXIT BUTTON

EXIT BUTTONS

Market leading exit buttons, that are both hard wearing and cost effective. Suitable for use in applications up to 30V.



EBPP02



EBPP02P/GN

SPECIFICATION

- EBPP02
- All active 360 push plate
 - 4 AMP contact @ 30V AC/DC
 - Surface or flush fitting
 - Double pole NO/NC contact
 - Internal or External use
 - Button rated IP65 ingress protection
 - Silver contacts
 - Operating temperature -20° to +60°c
 - Operating travel: 2mm
 - Contact resistance: 10m OHM (Max)
 - Operating life (mechanical): 1,000,000

FEATURES

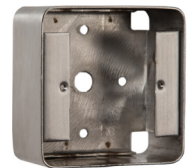
- EBPP02
- Ideal for general use
 - Easy cable entry from sides or rear
 - Screw footprint for flush fitting onto standard back box
 - Can be surface or flush fitting
 - Easy clean surface
 - Distance between fixing holes 60mm

OTHER PRODUCTS

120ISM-1



SSBB02



ML600



DU-GB/PTE



DIMENSIONS

- EBPP02
- 85x85x32 (mm)
 - 282g (Boxed) • 242g (Unboxed)
- EBPP02P
- 94x94x28 (mm)
 - 204g (Boxed) • 168 (Unboxed)

CONTENTS

- EBPP02
- Exit Button
 - Stainless Steel Plate (2mm)
 - 2 Security Screws
 - Allen Key
 - Surface Box



Manufactured by a BSIA Member